

Wyoming 511 Road Condition App



This is a quick guide to explain how to use the Wyoming 511 road condition app.

If you have questions that are not addressed in this document, see our Frequently Asked Questions page or email wyoroad@wyo.gov.

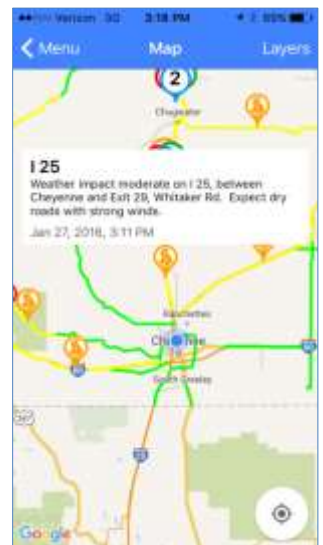
Map: Road Conditions

The map on our website uses a lot of colors to indicate road conditions, but on a small display it can be confusing. WYDOT opted to use impact colors instead, so glancing at the map you can get an idea of whether your drive will be impacted.

We have five colors: green is low impact, yellow is moderate impact, orange is high impact, red is closed and red with a white stripe indicates the road is closed to some but not all vehicles. This could mean the road is closed in one direction or certain types of vehicles are prohibited.

Understanding clusters

With the exception of dry roads, you can get the details of the conditions being reported by clicking on an icon. If the icons are close to each other, they cluster together to make the map easier to read. When you click on a cluster, the map zooms. Keep zooming until the icon you are interested in is no longer part of a cluster.



Map: Webcams

Webcam icons cluster like the condition icons.

To select a webcam icon, click the cluster and the map will zoom and the icons separate.

When you click on a webcam, an image will pop up. For a larger view of the camera or to see more images from that site, tap the image.

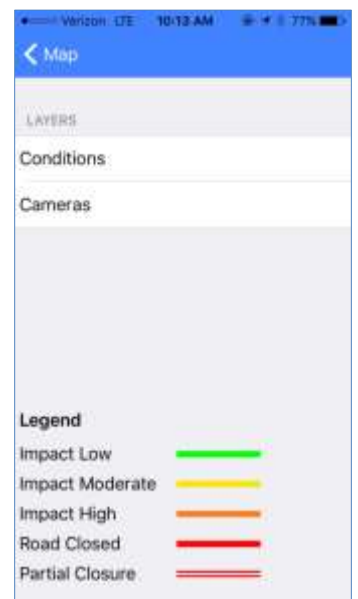
You can swipe to scroll through to see other images. To get back to the map, click back button (<Map) at the top of the screen or swipe from the left edge of your phone to the right.



Map: Layers/Legend

To change back and forth between road conditions and webcams, click the “Layers” button in the upper right corner.

This is also where you find the legend.



Hands-Free, Eye-Free

Distracted driving is a problem, but it's important for drivers to know what is happening on the roadway. To discourage drivers from using the map portion of the app while driving, we built a hands-free, eye-free component.

We intend for drivers to start Hands-Free, Eye-Free before they leave and stop it when they reach their destination.

Drivers can select a range (see the settings section) and as they drive down the road, the app will speak upcoming conditions for the route they are driving on and incidents like crashes that happen nearby regardless of the route.

This function takes a lot of battery power because it requires your phone's GPS to run. It also consumes data because it downloads new data from WYDOT every 15 minutes. Your location information is not sent to WYDOT. WYDOT sends your phone data and the application determines what is relevant.

We recommend you have your phone plugged in while you are using this function.



What will you hear?

For road conditions, alerts follow a script. You will hear how much of an impact the weather is expected to have on travel, the location the impact applies to and what kind of conditions you can expect.

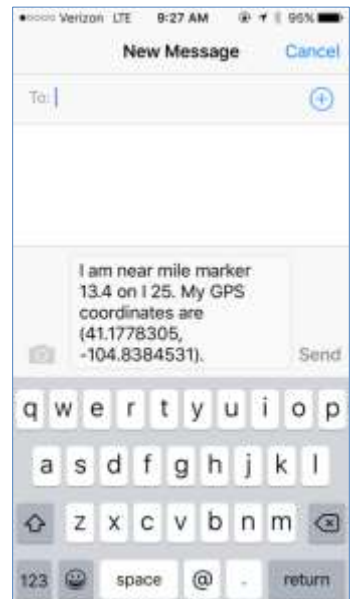
For example, a traveler on Interstate 80 might hear: Weather impact moderate on I-80 between Exit 323 Happy Jack Road and Cheyenne. Expect dry roads with strong winds. Use extra caution. Stay alert for changing road and weather conditions.

Where Am I?

If you run into trouble while driving, it can be difficult to know your exact location. The Where Am I? function is designed to tell travelers their location to the nearest 1/10 of a mile. On a state-maintained highway, this page will tell you your route, mile marker and lat/long. Off of a highway it will tell you your lat/long.

When you go to the Where Am I? screen, you will need to click “Refresh Location” to see location information.

If you click the “Send My Location” button, the app interfaces with your phone’s text message function so you can send your location to someone if you need help.



Settings

Hands Free, Eye-Free

There are several user configurable settings accessible from the Hands-Free, Eye-Free screen. To access them, click “Options” in the upper right corner of the Hands-Free screen

Voice: The voice your phone uses is based on your overall phone settings, but you can change the pitch and speed specific to this app.

Range: Lets users decide how far in advance they would like to hear conditions and incidents.

Delay: The amount of time between updates if there are multiple messages to relay.

General Settings

Under your phone’s general settings, you can determine whether to use location services, which are required for use of hands-free, eye-free mode and whether to use cellular data, which is required for the app to receive data if it is not in Wi-Fi range.

